

[Welcome](#)[Research  
Intro](#)[Market](#)[Industry](#)[Financial  
Ratios](#)[Household  
Spending](#)[Census  
2006](#)[Research  
Services](#)[Source  
Lists](#)[Census 2006](#) / [Census 2006 - Local Data](#) / [Census 2001](#) / [Census Geography](#) / [Quote Request](#)

## Accessing Local Data from the Canadian Census 2006

### *Community and Neighbourhood demographics*

[Click Here for Printer Friendly Version](#)

All variables from the 2006 Census have now been released. In total a full profile now includes 38 pages of detailed demographic data.

[Click here to view a list of all 2006 Census variables.](#)

You can access all these variables for free at a national, provincial and metropolitan area level by visiting the main [Stats Can 2006 Census highlight pages](#).

### Full Census Profiles for Local Markets

If you are interested in full census profiles for a local market, you will need to request a custom retrieval. Prices vary depending on the nature of the local market you are interested in. [Tell us the boundaries of your local market](#) and we will provide you with a quote.

If a summary report will meet your purposes the following free resources provide summary Census profiles:

### Community Data - 2006 Community Profiles

These profiles present community-level information from the 2006 Census of Population. You can search for your town, municipality or region by keyword search or by selecting it from a geographic hierarchy.

The data available in these profiles is limited by the [2006 Census release schedule](#). As more data is made available, these profiles will become more robust.

## Neighbourhood Data - GeoSearch 2006

This interactive mapping application is primarily designed to help you navigate through the Census geography structure but it also allows you to easily locate and access Census Tract profiles. Census Tracts (CTs) are geographical areas that are small and relatively stable from Census to Census. They usually have a population of 2,500 to 8,000. CT profiles allow you to examine the demographics of a local neighbourhood.

You can also use this data for market size estimates at a small neighbourhood level. For example you can combine the dwelling data with expenditure data from the [Survey of Household Spending](#) to estimate the number of households and market value for your product or service.

[GeoSearch 2006](#) also has a collection of premade Thematic Maps to help you visually plot various aspect of your local market.

[Click here to access GeoSearch 2006](#)

## Guide to Using GeoSearch 2006 to Profile a Census Tract

Overall [GeoSearch 2006](#) works well although it is not particularly intuitive. The following steps together with screen shots should simplify the process of locating a Census Tract for you.

### 1. Go to the GeoSearch main page.

[Click here](#) to open GeoSearch in a new window.

### 2. Search for your local market.

Click on the "**Search Tab**" below the main map for search options. We find that the postal code search is the easiest method of locating an individual Census Tract.



### 3. Identify the Census Boundaries you are interested in.

The most detailed local information accessible via GeoSearch 2006 is at a Census Tract level. (For more information on Census geographies see our [Research Guide on Census Geography](#).)

To identify the relevant Census Tracts to your local market click on the "**Layers (1) Tab**" and select "**Census Tracts**".

#### 4. Locate the Census Tract you want to profile.

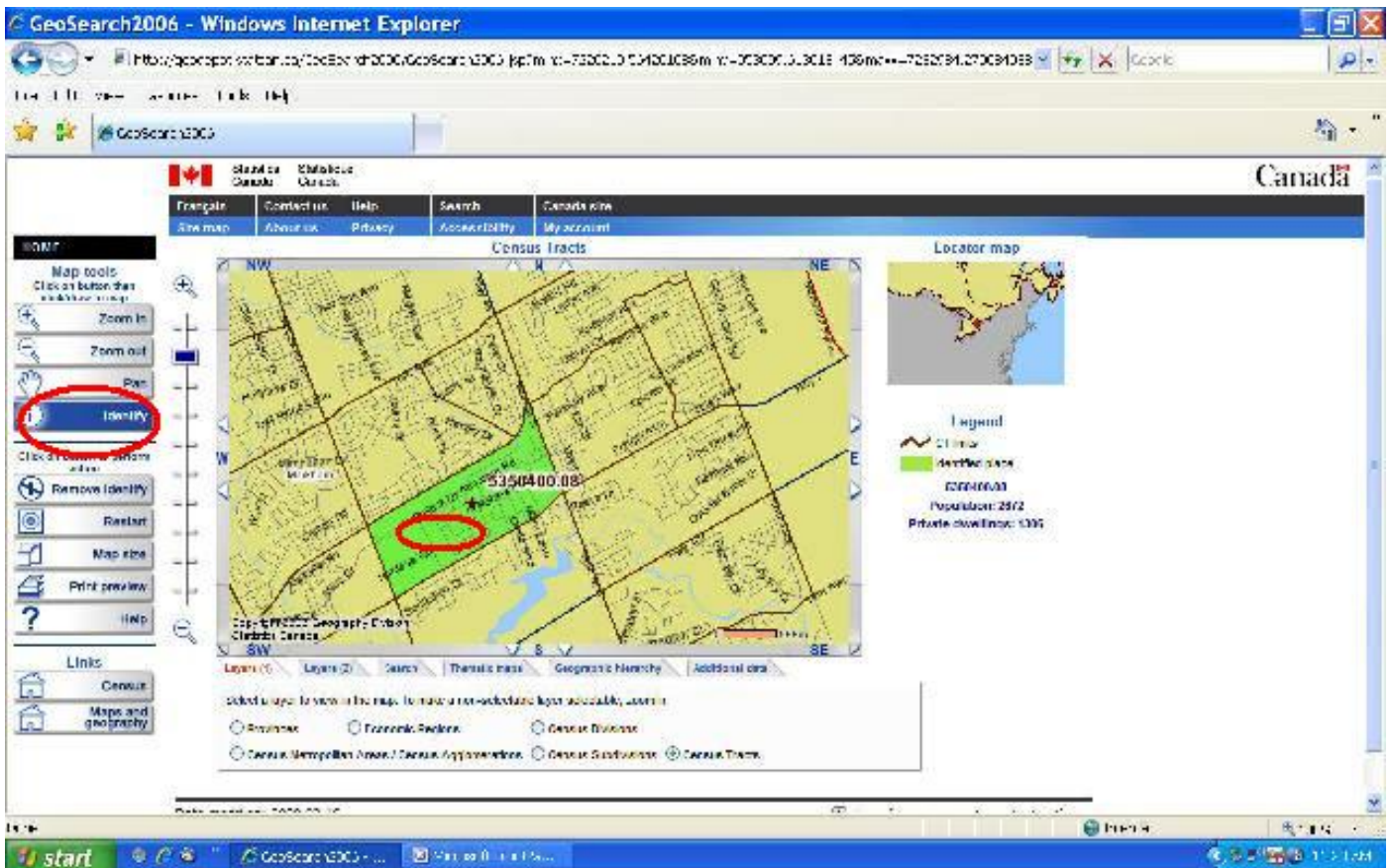
After your initial search you will not be able to see the full boundaries of the Census Tracts in your local market. Click on the "Magnification Scale" to the left of the map to "zoom" out one level.

You will now be able to see complete Census Tract boundaries:

The screenshot shows the GeoSearch2006 website interface. The main map area displays a grid of census tracts. A red circle highlights the 'Identify' button in the map tools panel on the left. The map shows a grid of census tracts with labels like 'Census Tract 1' and 'Census Tract 2'. A legend on the right indicates 'Census Tract 1' with a population of 24,612,687 and a land area of 15,378,885. The website header includes 'Canada' and navigation links like 'Home', 'Contact us', 'Help', 'Search', and 'Canada site'.

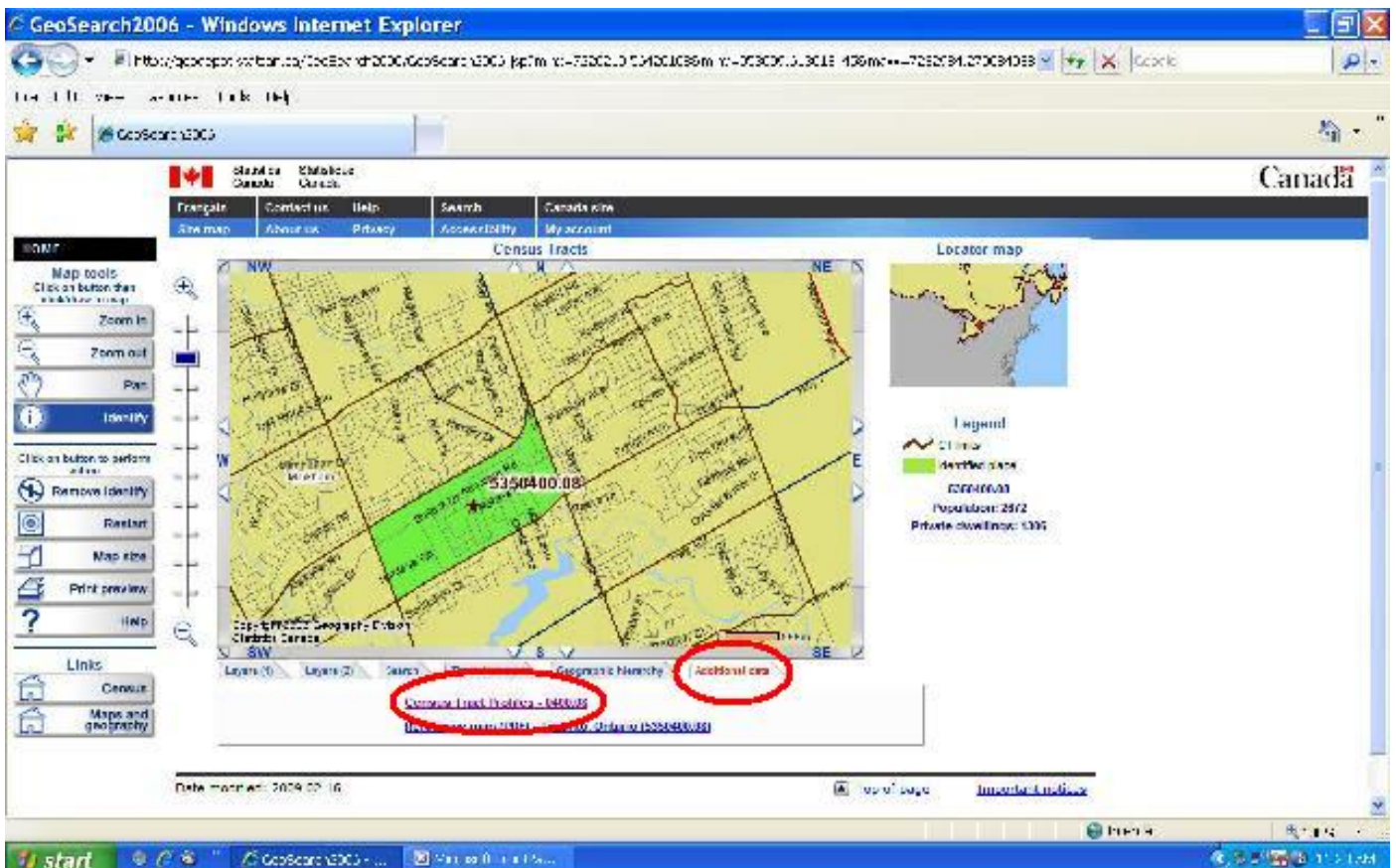
#### 4. Identify the Census Tract you want to profile.

Click on the **"Identify Button"** on the far right of the page and then click on the map inside the boundaries of your chosen Census Tract. The selected Census Tract will turn green.



### 5. Retrieve Census Tract Profile data

Click on the "Additional Data Tab" below the main map and click on the link "Census Tract Profiles".



Screen shot of final profile:

The screenshot shows a Windows Internet Explorer browser window displaying the Statistics Canada website. The page title is "Census tract profile for 0400.08 (CT), Toronto (CMA) and Ontario". The page features the Statistics Canada logo and navigation links. A table titled "All data" compares three geographic areas: 0400.08 (CT), Toronto (CMA), and Ontario (PR). The table includes data for population and dwelling counts, age characteristics, and land area.

	0400.08 (CT)	Toronto (CMA)	Ontario (PR)
<b>Population and dwelling counts</b>			
Population in 2006 <sup>1</sup>	2,572	5,111,148	12,150,200 <sup>2</sup>
Population in 2004	2,295	4,807,097	11,410,046 <sup>2</sup>
2001 to 2006 population change (%)	+1.2	0.2	6.6
Total private dwellings <sup>3</sup>	1,300	1,801,430	4,972,809
Private dwellings occupied by usual residents <sup>4</sup>	1,261	1,801,071	4,884,251
Population density per square kilometre	1,070.9	856.1	11.4
Land area (square km)	1.75	5,903.63	907,573.82
<b>Age characteristics</b> <small>Age groups</small>			
Total population <sup>5</sup>	2,570	5,111,148	12,150,200

[View GeoSearch 2006](#)

© John White, GDSourcing - Research & Retrieval 2009

[Home](#) - [Research Intro](#) - [Market](#) - [Industry](#) - [Financial Ratios](#) - [Household Spending](#) - [Census](#) - [Research Services](#) - [Source Lists](#) - [Contact](#)